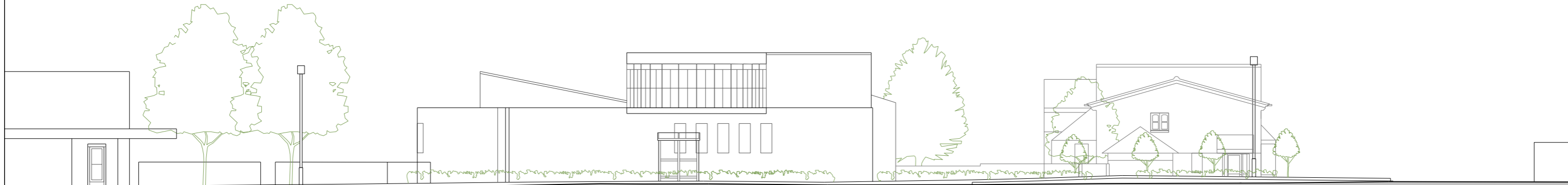


A Existing
P_721 Elevation 1:200



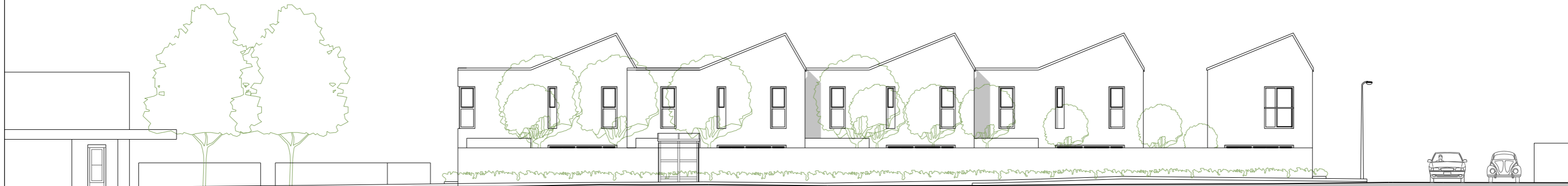
The Renown

The Renown Pupil Referral Unit

Car Park (10-12 Centurion Close behind)

Centurion Close

B Proposed
P_721 Elevation 1:200



The Renown

Proposed Housing (Garden Wall)

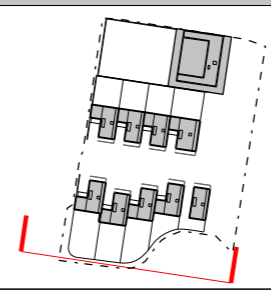
Centurion Close

General Notes:
 1. All dimensions to be checked on site.
 2. Do not scale from this drawing.
 3. Drawing to be read in conjunction with all other relevant Figure/Ground Architects and consultant information.
 4. Do not measure dimensions directly from electronic drawings and only use annotated dimensions provided by Figure/Ground Architects as part of the original hard copy prints.

Copyright:
 Neither this document or any information it contains may be copied or communicated to third parties without written permission from Figure/Ground Architects dimensions directly from electronic drawings and only use annotated dimensions provided by Figure/Ground Architects as part of the original hard copy prints.

Rev	Notes	BY	Check	Date

REVISIONS	BY	Check	Date



figure/ground architects
 5-8 Crown Works, Temple Street,
 London, E2 6QQ
 Tel +44(0)203 774 6390
 enquiries@figureground-architects.com
 www.figureground-architects.com

Drawing Status: Planning Application			
Project: Friars Library Site			
Drawing Title: Housing: Street Scene Elevation - South Elevation onto Constable Way			
job no.	drawing no.	revision	stage
729	P_721		3
scale	size	drawn	date
1:200	A3	LW	9 December 2016